

Shenzhen Anke High-tech Co., Ltd.

Address: Block B, LingYa Industrial Zone, Tangtou No.1 Road,
Bao'an District, Shenzhen, 518108, P.R. China

Tel: +86-755-21622518 26688889

Fax: +86-755-26695307 26685908

Email: anke@anke.com

Website: www.anke.com

Follow us on:



ANKE(@ankeint)



ANKE(@ankemri)



ANKE(@ankemarcom)



Shenzhen Anke High-tech Co., Ltd

ANATOM Precision

High-end intelligent 128-slice CT scanner



Insight into life



ANATOM Precision, is our new coming member of our CT family, which is a high-end intelligent 128-slice CT scanner. It features comprehensive clinical applications from routine to cardiac imaging, especially advanced spectrum imaging which allows you conduct high-level applications and delivers you more confidence in diagnoses compared with traditional CT scanner.

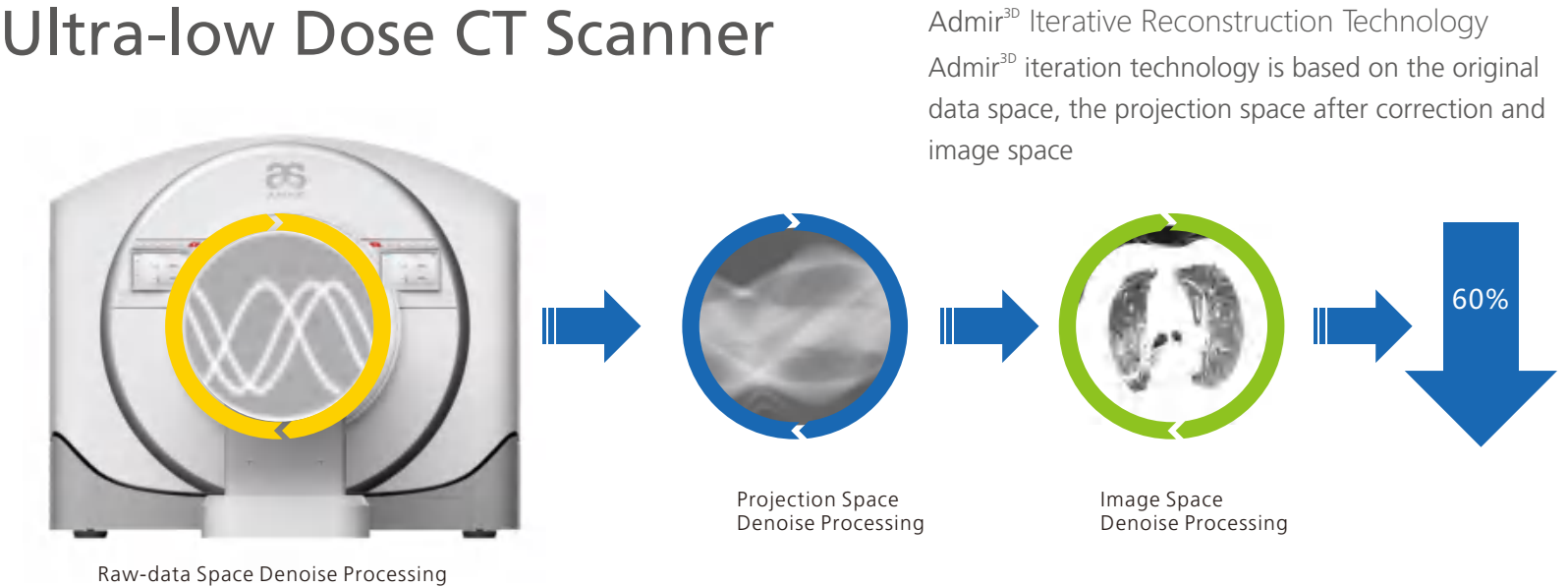


Intelligent CT scanner

ANATOM Precision is an intelligent CT scanner. From the beginning of Patient Positioning, Scout View, Dose Optimization, Artifact Suppression, Spectrum Imaging*, Image Noise Reduction and to the end of Diagnosis, it has been powered by ANKE proprietary technologies.

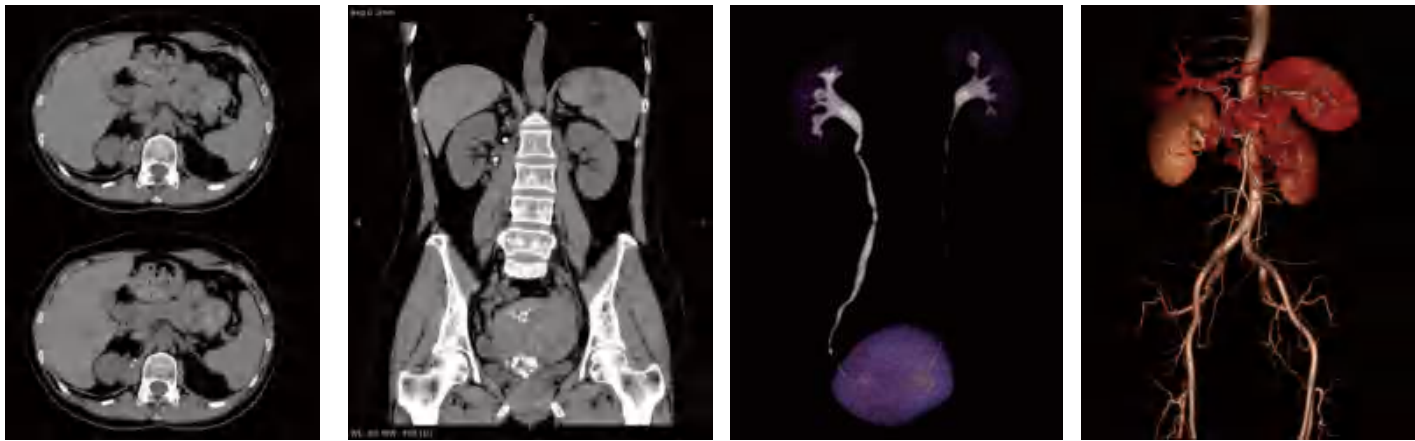
* For scientific research only

Ultra-low Dose CT Scanner



ASR Super Resolution

ASR is extremely high resolution reconstruction algorithm for obtaining superb image quality. It allows you make very clear detailed visibility of tiny structure with high resolution and contrast.



120 kVp, Adose, 0.5 sec./rotation, Pitch=1.375, Collimation Width=40 mm, Slice 0.3125 mm, Scan Time=5.6 sec.

*AccuPositioning-intelligent sky-eye positioning system

Sky-eye visual perception intelligently recognize the 3D center of the scan range and automatically aligns it with the isocenter. With one click, AccuPositioning uses all of this information to automatically center your patient for a completely hands-free positioning experience. ”

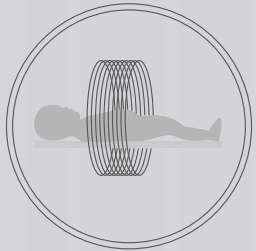


Artifact Suppression

Gantry's built-in camera-"Eagle eye" allows real-time monitoring of the patient's status. Together with artifact suppressoin technology, the system enables intelligent real time image artifact correction.



AccuDose-Comprehensive low dose imaging



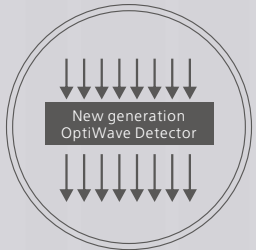
Pediatric Scan
Protocol



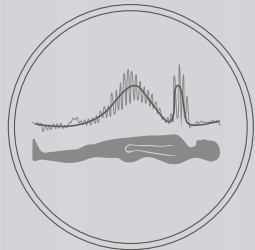
Individual Dose
Monitoring



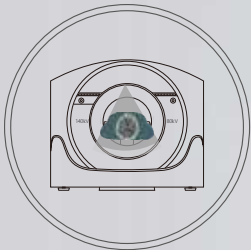
AccuShape Filter



Efficient Detector



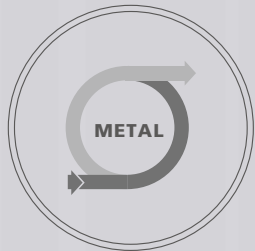
Adose Dose Modulation



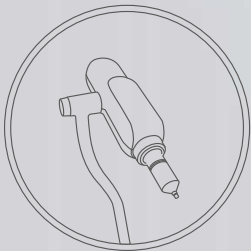
AccuSpin



Iterative Reconstruction



Amast

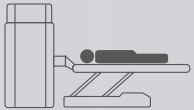


Contrast Agent Tracking
Technology



AccuScan-Enjoy ease

Convenient and efficient operation process greatly improve work efficiency
to achieve high volume of patients



AccuOrientation

Preset intelligent positioning procedures
to enable one-button accurate patient
positioning



AccuEmergency

Skip patient registration for emergency
scansto save time



AccuScanning

Carefully designed default scan protocols
help to get high quality images with ease



AccuTracing

Automatic bolus tracking to trigger the scan
for precise scan timing



AccuReconstruction

Up to 65 frms / sec real-time reconstruction



AccuPrinting

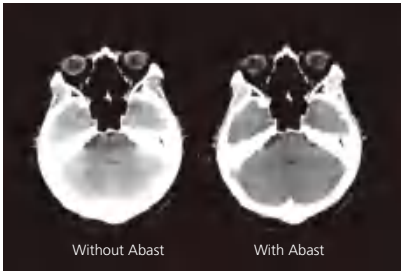
Intelligent typesetting and quick printing
to save time

AccuOrgan-Targeted organ imaging

To achieve high precision imaging of each part of human body at low dose and low energy consumption

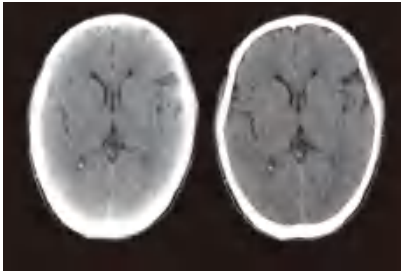
Abast-Bone artifact suppression technology

Abast eliminates the X-ray beam hardening effects to the cerebellum, brain stem and other parts of the brain and clearly shows the structure and lesions of the brain stem and cerebellum.



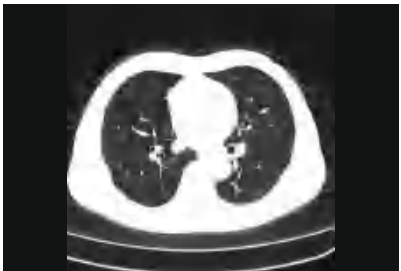
AccuHead-Gray & white matter enhancement technology

AccuHead technology is specifically designed for brain scans to improve the contrast between gray matter and white matter without sacrificing image quality.



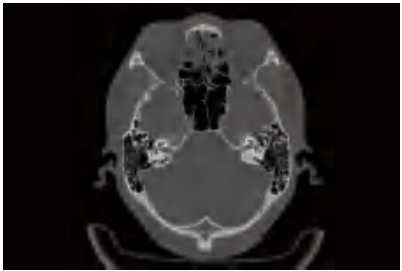
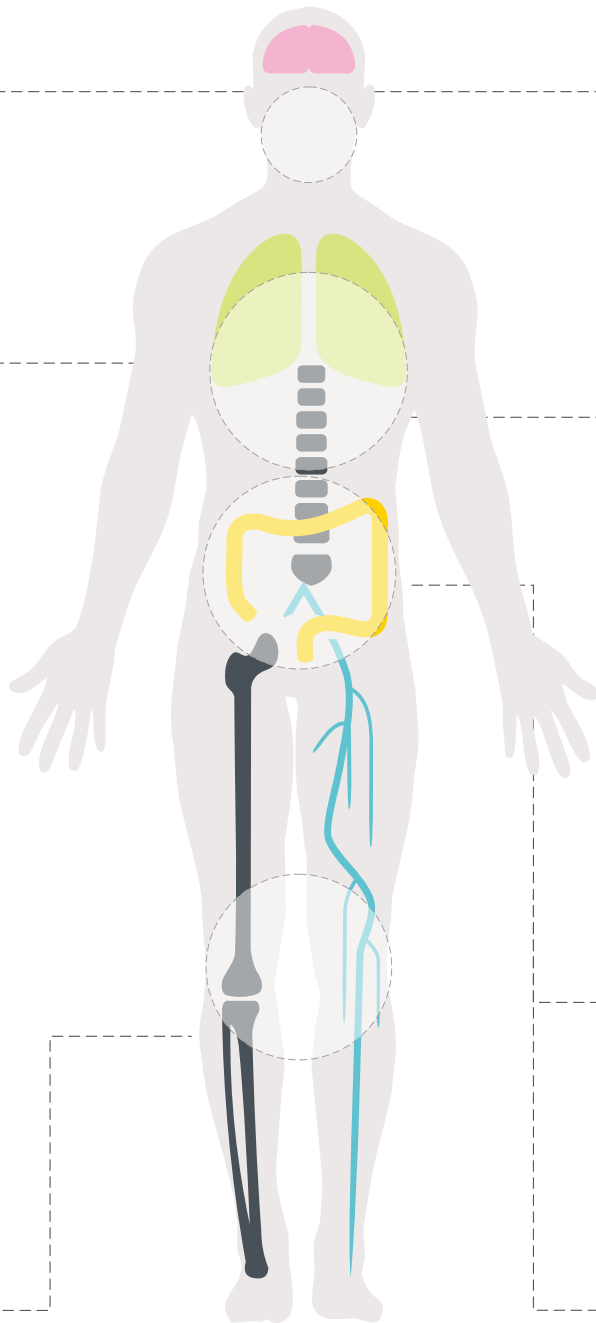
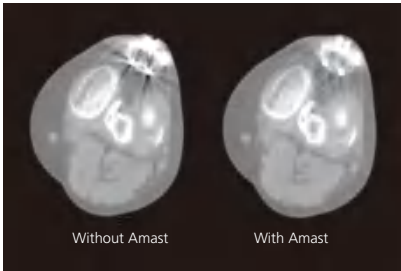
AccuOrgan-High resolution lung imaging

High resolution images of the lung can be obtained at only 30%~40% of conventional radiation dose



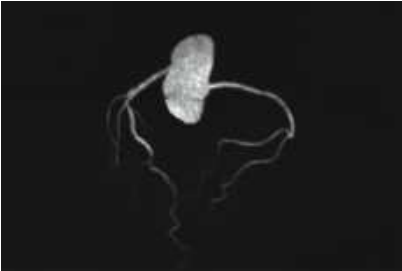
Amast-Metal artifact suppression

Dual-domain iteration is adopted to effectively remove metal artifacts and restore the soft tissue around the metal



AccuImage-Microscopic imaging technology

1024x1024 matrix to display more details of the pathological changes and provide a reliable information for early detection, early diagnosis and early treatment of the diseases



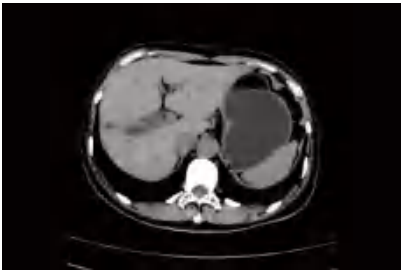
Aheart-Coronary angiography

Innovative ECG gated trigger and real-time dynamic tube current modulation are applied to achieve low dose HD coronary angiography, which can clearly reveal the fine structure of coronary arteries



AccuBone-High resolution bone imaging

Enhanced bone edge contrast can provide accurate anatomic relationships and show early destruction and cyst of subchondral bone like lesions and articular cartilage calcifications



AccuOrgan-Body high resolution imaging

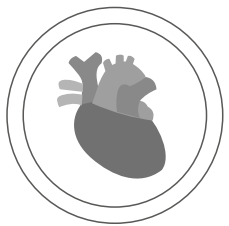
Combined with the AccuImage microscopic imaging technology, AccuOrgan technology can significantly increase the display of fine structure and morphology of the abdomen and provide more accurate images for the early diagnosis of small lesions

Comprehensive CCTA Solution

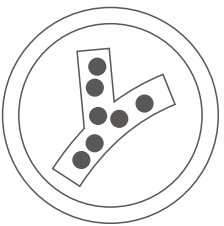
Perfect for patients with high heart rates and complex rhythms, enabling CCTA imaging at ultra-low doses and low contrast dosages



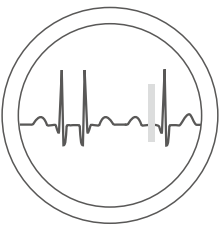
AccuPitch coronary adaptive pitch



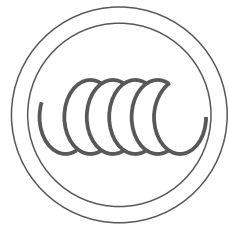
AccuGating intelligent gating CCTA imaging



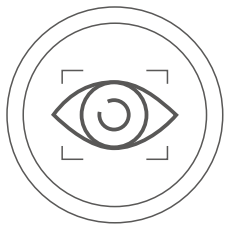
Aheart intelligent low-dose CCTA image



AccuCardio prospective scan for arrhythmia



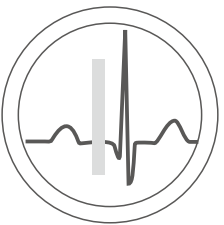
Large pitch HD CCTA imaging



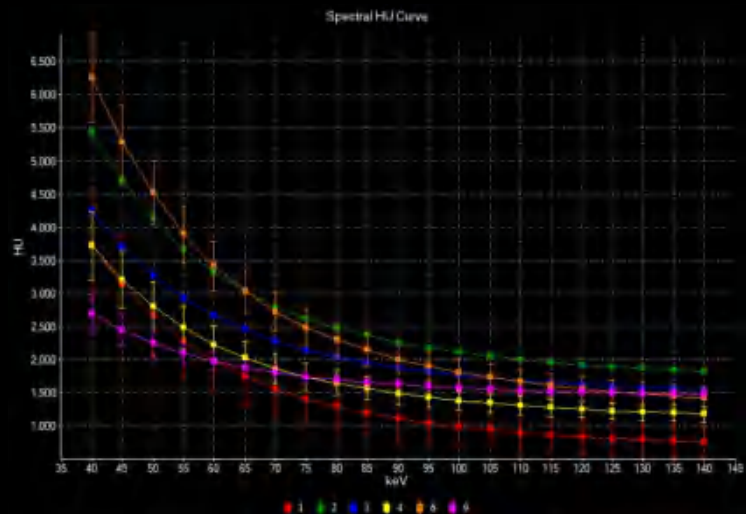
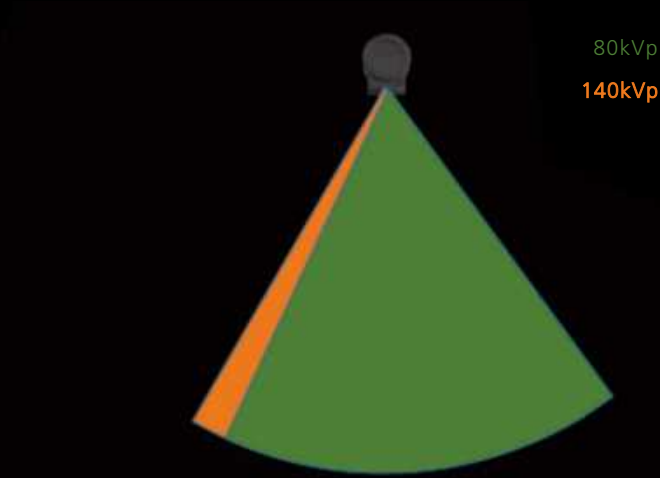
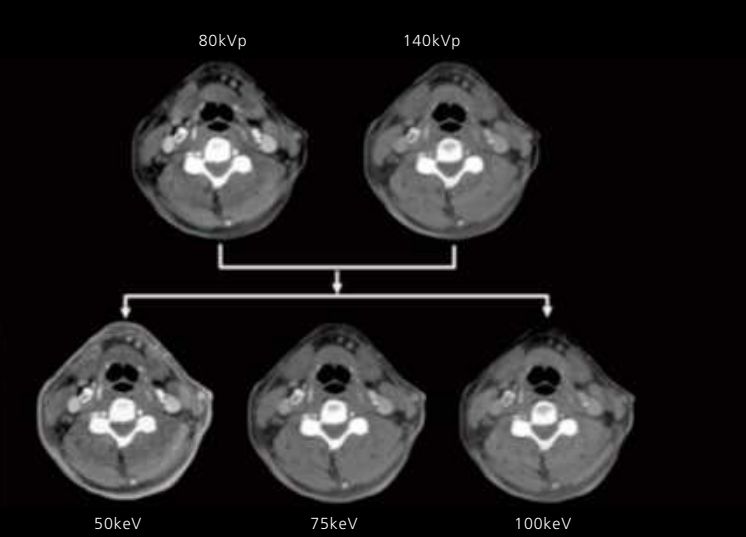
AccuTracking intelligent coronary artery tracking



Parameters self-adaptive CCTA imaging

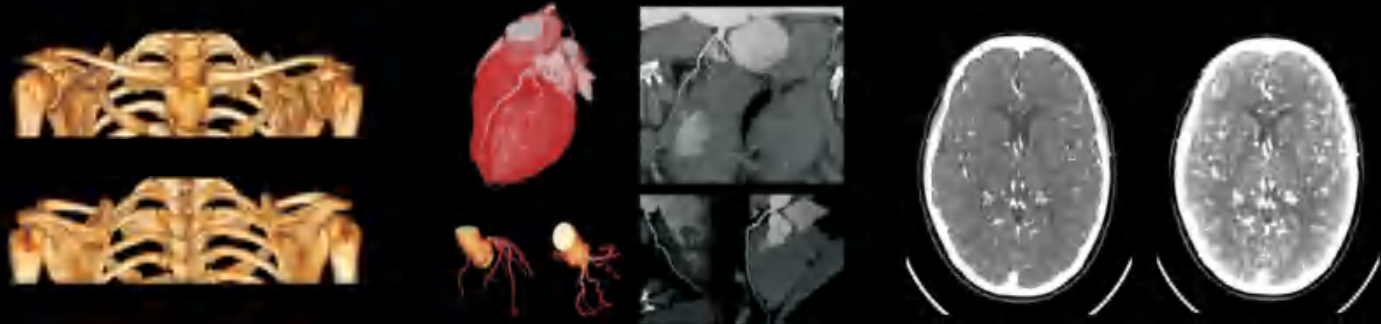
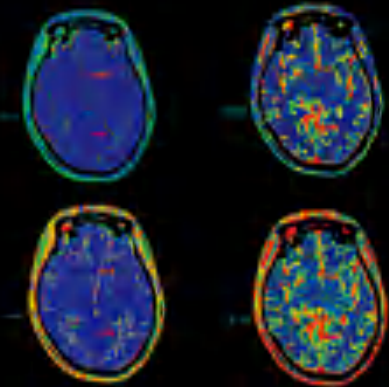
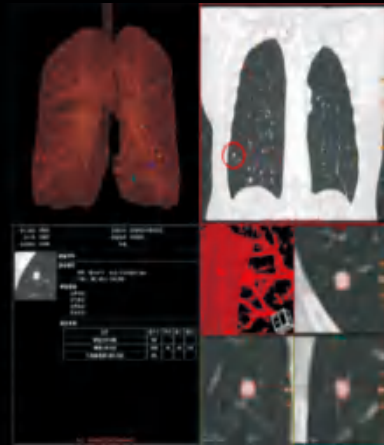
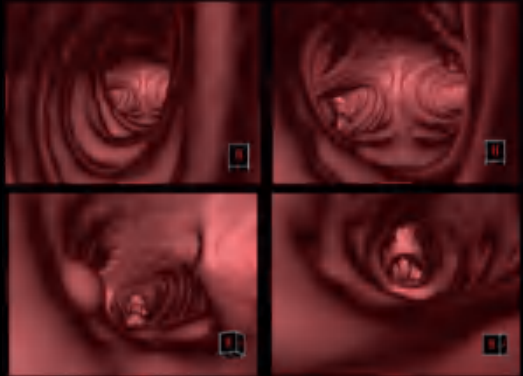
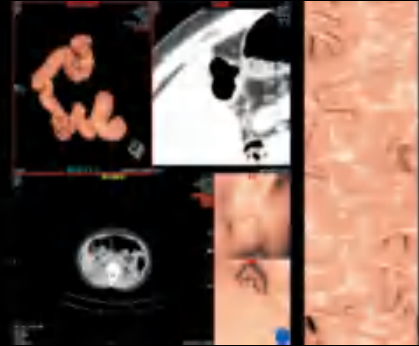
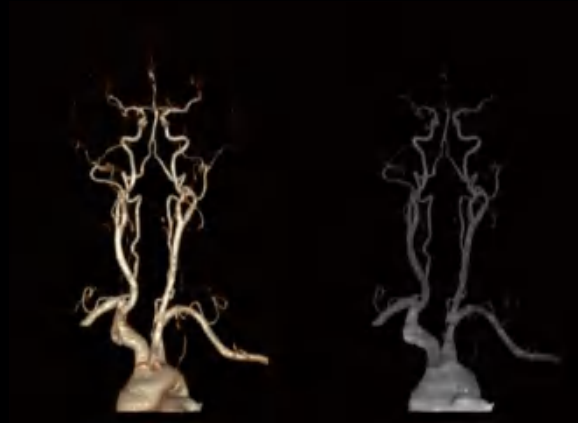


Prospective ECG gating scan

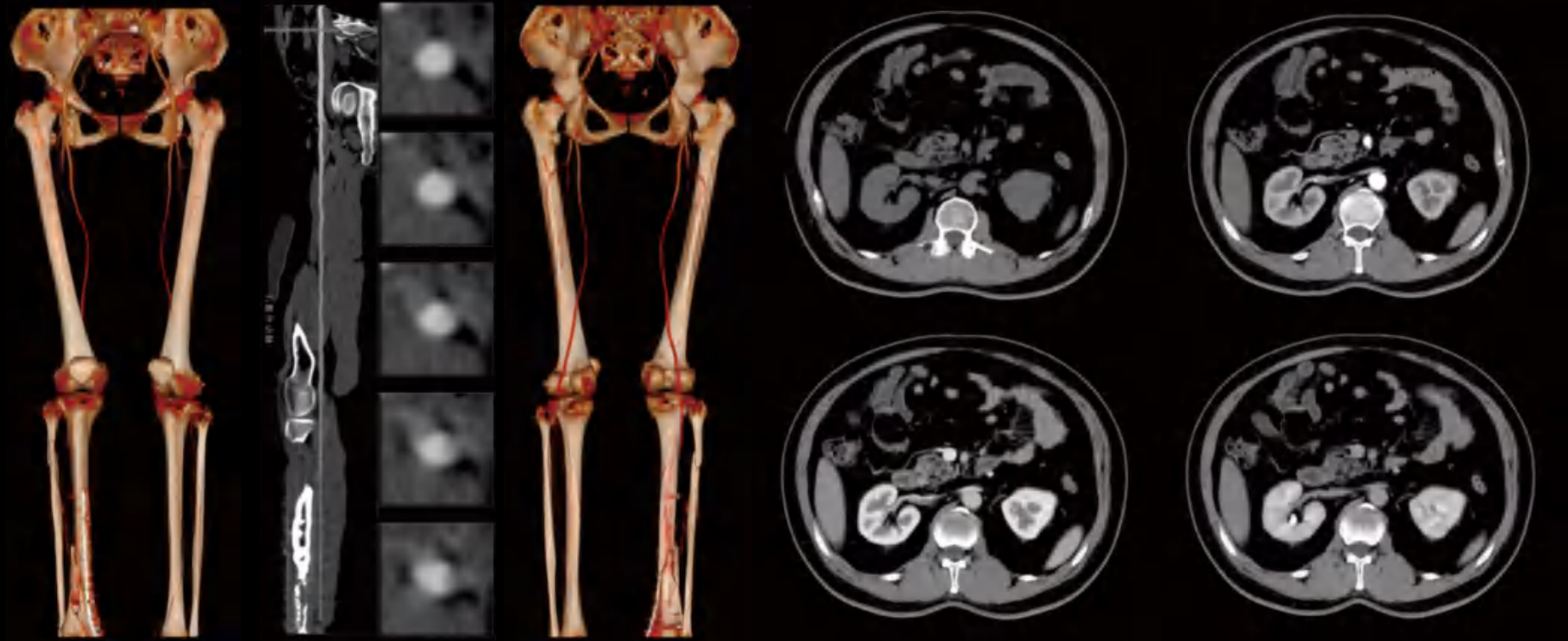


*AccuSpin Spectrum Imaging

AccuSpin dual dual energy imaging technology uses high / low kVp dual cycle scanning, combined with the current automatic modulation technology of Adose, and achieves energy separation through unique energy algorithm at equivalent dose.



From the moment you choose ANKE, our all-round cooperation begins. Once you are in ANKE's global customer service system, you will experience a complete service solution that is all you expect, all you want and all you need.



Service Platform

- 24-hour call centre service
- Spare parts guarantee in the spare parts centre
- Professional tools for efficient ensurance



Service Quality

- One-to-one service by technical experts
- Preventive maintenance
- Timely detection of hidden problems



Service Network

- Over 100 engineers
- Over 30% technical experts
- R&D-led technical support centre



Service Efficiency

- Remote support
- Fast problem solving
- Efficient dispatch to reduce time